

SAQ 4

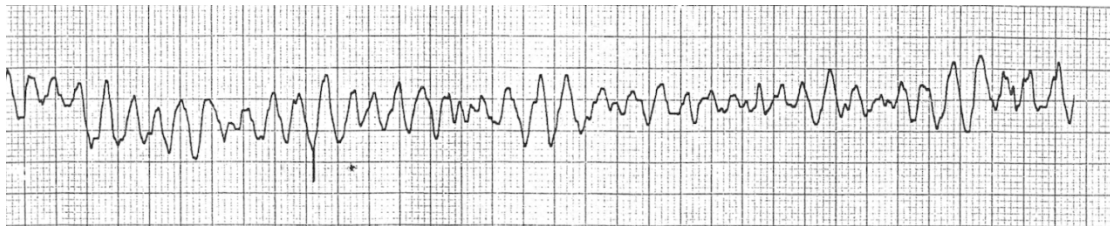
An elderly man collapses and is unresponsive at a shopping centre.

1. What are the 4 elements in the chain of survival that improve the probability of survival? (2 marks)

Early access to emergency medical services, BLS, defibrillation and advanced care (0.5 mark for each, accept ambulance/EMS as alternatives to emergency medical services)

From Cameron, Textbook of Adult Emergency Medicine, 2009, p5

He receives prompt BLS from bystanders, then defibrillation from an AED prior to the arrival of the ambulance 10 minutes post-arrest. He is found to be in VF and does not revert with defibrillation by the ambulance crew. He is transported to ED, where he is still pulseless and the monitor shows this rhythm.



2. What are your immediate actions? (8 marks)

- Assume leadership, delegate roles
- Ensure continuous BLS provided throughout
- Manual biphasic shock 200J
- Continue CPR 2 minutes
- During CPR:
 - Check electrode position
 - Secure IV access
 - Adrenaline 1mg and repeat after second shock and every second loop
 - Correct reversible causes (4Hs,4Ts)
 - Advanced airway
 - Amiodarone 300mg after 3rd shock
- Post-resuscitation care/12-lead ECG/reperfusion

From ARC Resuscitation guideline, online, accessed 5/8/2014