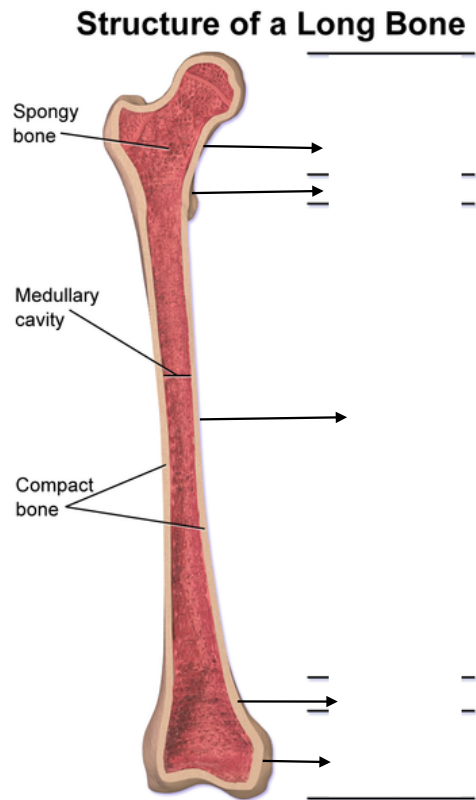


Orthopaedics

1. What are the name of the following parts of the bone?



2. What are the common ages for osteomyelitis?

3. What are the most common forms of spread of infection to bone in adult and adult/children?

4. What are the risk factors for OM?

5. What is Perthes disease?

6. What is usual history and examination in transient synovitis?

7. What is the common age of slipped femoral epiphysis and what are the usual history and examination findings of this condition?

8. List your differential diagnosis of a limping child?

9. What is Kocher criteria?

10. List the potential causes of monoarthritis?

11. List some of the causes of polyarticular arthritis?

12. List the important points in a focused history of a patient with monoarthritic?

13. List the potential complications of arthrocentesis?

14. What are the landmarks for needle insertion in knee joint aspiration?

15. What are the landmarks for needle insertion in glenohumeral joint aspiration?

16. What are the landmarks for needle insertion in wrist joint aspiration?

17. What are the landmarks for needle insertion in ankle joint aspiration?

18. What are the landmarks for needle insertion in elbow joint aspiration?

19. What are the normal synovial fluid characteristics?

20. List the differences between inflammatory and infected synovial fluid?

21. List the potential investigations required on synovial aspirate?

22. What is the usual history of a patient presenting with likely gout?

23. What is the most common joint involved in gout?

24. What is the clinical application of urate level in a patient with monoarthritis?

25. What is the of a patient with gout?

26. What is the pathophysiology of pseudogout?

27. Which is the most common joint involved in pseudogout?

28. List the risk factors of septic arthritis?

29. What is the pathophysiology of transmission of infection to joint?

30. What are the important points in the history taking of a patient with suspected septic arthritis?

31. What are the most common joint involved in septic arthritis?

32. What is the antibiotic of choice in patients with suspected septic arthritis?

33. What are the different types of acute bursitis and their treatment?

34. List the redflags for low back pain?

35. Where is the most common site of disc herniation?

36. What level disc herniation can potentially cause cauda equina syndrome?

37. What are the symptoms and signs of cauda equina?

38. What are the risk factors for vertebral infection?

39. What is Salter-Harris Classification?

40. List the general principal steps of management of any fractures & dislocations?

41. What is:

**Hangman's**

**Clay shoveller's**

**Jefferson**

**Colle's**

**Smith's**

**Barton's**

**Bennett's**

**Rolando's fracture**

**Boxer's**

**Segond**

42. List the hard signs of arterial injury in limb injury?

43. What are the soft signs of arterial injury in limb trauma?

44. What is ABI (arterial pressure index) (ABI, ankle brachial index)?